

Biotinylated Human CTLA-4/CD152 Protein

Cat. No. CTL-HM401B

Description

Source	Recombinant Biotinylated Human CTLA-4 Protein is expressed from HEK293 with His tag and Avi tag at the C-Terminus. It contains Lys36-Asp161.
Accession	P16410
Molecular Weight	The protein has a predicted MW of 16.3 kDa. Due to glycosylation, the protein migrates to 25-30 kDa based on Bis-Tris PAGE result.
Endotoxin	Less than 1EU per µg by the LAL method.
Purity	> 95% as determined by Bis-Tris PAGE > 95% as determined by HPLC

Formulation and Storage

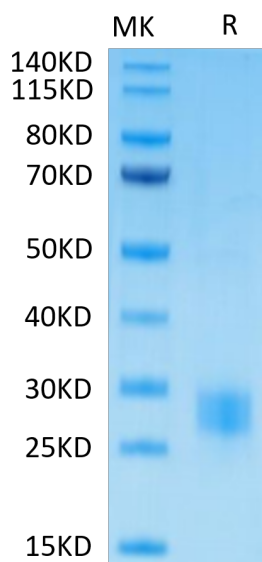
Formulation	Lyophilized from 0.22µm filtered solution in PBS (pH 7.4). Normally 8% trehalose is added as protectant before lyophilization.
Reconstitution	Centrifuge the tube before opening. Reconstituting to a concentration more than 100 µg/ml is recommended. Dissolve the lyophilized protein in distilled water.
Storage	-20 to -80°C for 12 months as supplied from date of receipt. -80°C for 3 months after reconstitution. Recommend to aliquot the protein into smaller quantities for optimal storage. Please minimize freeze-thaw cycles.

Background

CTLA-4 (cytotoxic T-lymphocyte-associated protein 4), also known as CD152, is a protein receptor that, functioning as an immune checkpoint, downregulates immune responses. CTLA4 is constitutively expressed in regulatory T cells but only upregulated in conventional T cells after activation – a phenomenon which is particularly notable in cancers. It acts as an "off" switch when bound to CD80 or CD86 on the surface of antigen-presenting cells.

Assay Data

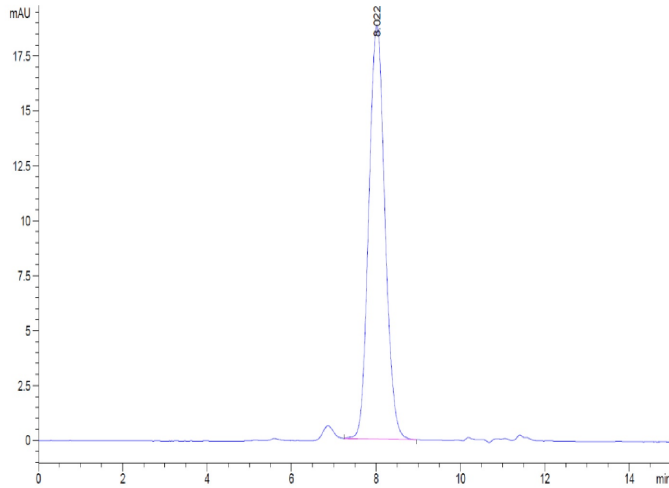
Bis-Tris PAGE



Biotinylated Human CTLA-4 on Bis-Tris PAGE under reduced condition. The purity is greater than 95%.

SEC-HPLC

Assay Data

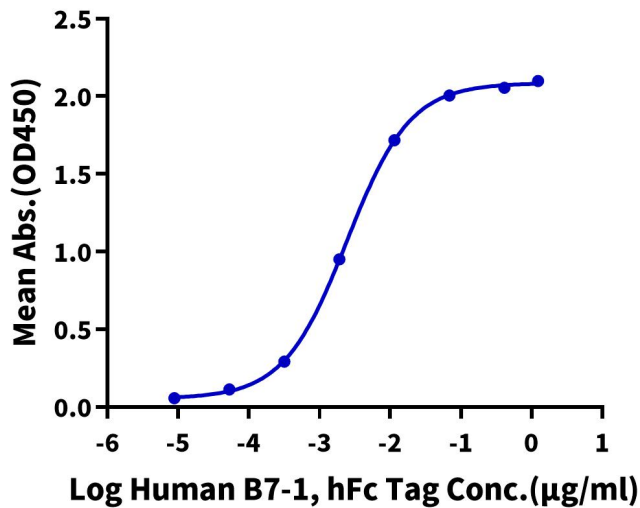


The purity of Biotinylated Human CTLA-4 is greater than 95% as determined by SEC-HPLC.

ELISA Data

Biotinylated Human CTLA-4, His Tag ELISA

0.1µg Biotinylated Human CTLA-4, His Tag Per Well

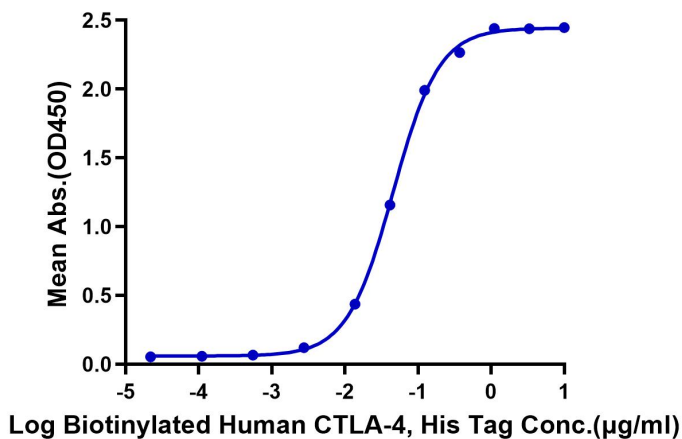


Immobilized Biotinylated Human CTLA-4, His Tag at 1µg/ml (100µl/well) on the streptavidin precoated plate (5µg/ml). Dose response curve for Human B7-1, hFc Tag with the EC50 of 2.4ng/ml determined by ELISA (QC Test).

ELISA Data

Biotinylated Human CTLA-4, His Tag ELISA

0.1µg Anti-CTLA-4 Antibody, hFc Tag Per Well



Immobilized Anti-CTLA-4 Antibody, hFc Tag at 1µg/ml (100µl/well) on the plate. Dose response curve for Biotinylated Human CTLA-4, His Tag with the EC50 of 45.7ng/ml determined by ELISA.